



XVI
Meeting
degli
Utenti
Italiani
di
GRASS
GFOSS



grass.it

TUTELA DEGLI ACQUIFERI CARSICI

ANALISI E TECNOLOGIE DELL'INFORMAZIONE GEOSPAZIALE

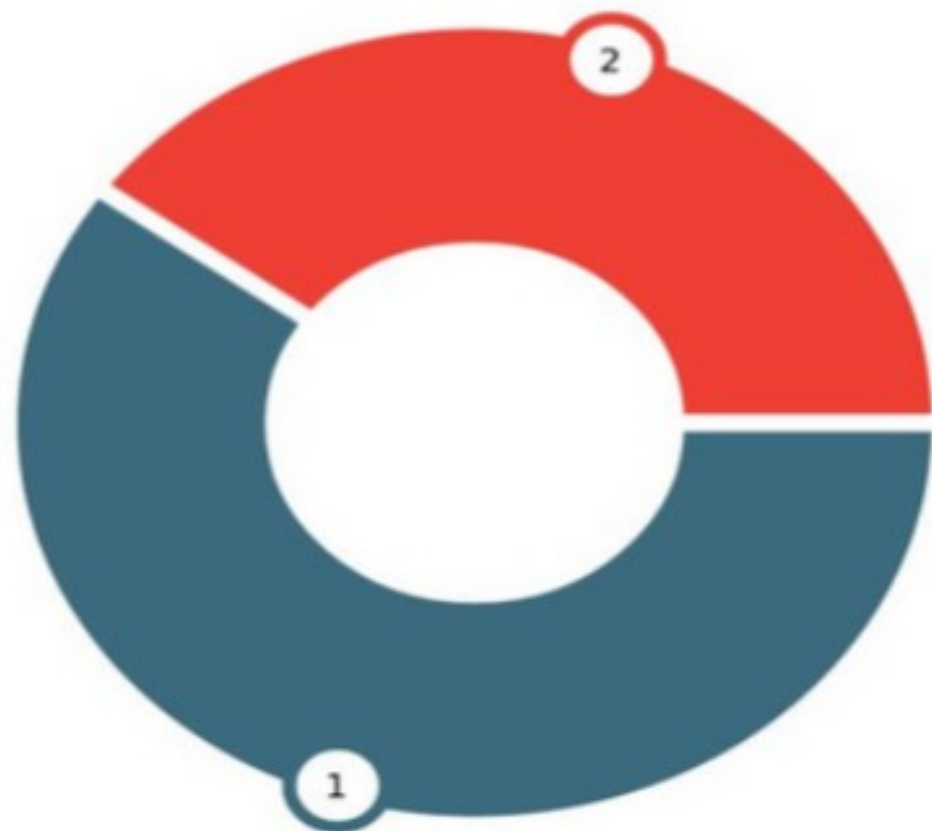
Prof. Luigi Di Prinzio
Dott. Ing. Antonio Rusconi
Dott. Geo. Niccolò Landelli
Filippo Gregori

I
- - -
U
- - -
A
- - -
V



Gli ACQUIFERI CARSICI sono importanti?

BACINO DEL MEDITERRANEO: RISORSE IDRICHE



①	ALTRE ORIGINI	60%
②	ACQUE CARSICHE	40%

A photograph of a cave interior. The scene is dimly lit, showing a large pool of water in the foreground. The water has a greenish tint, possibly due to algae or mineral deposits. The cave walls are made of rough, layered rock. A stalactite hangs from the ceiling on the left side. The overall atmosphere is mysterious and natural.

Gestione del rischio
MONITORAGGIO DELLE RISORSE

GESTIONE SOSTENIBILE DELLE ACQUE SOTTERRANEE

INFORMAZIONI SUL SISTEMA CARSIICO

INFORMAZIONI SUL SISTEMA DI DRENAGGIO

GEOLOGIA
GEOMORFOLOGIA

GEOFISICA

IDRODINAMICA

BILANCIO IDRICO

CHIMICA DELLE
ACQUE

TECNICHE DI
TRACCIAMENTO

MODELLIZZAZIONE
NUMERICA

A photograph of a cave interior. The scene is dimly lit, showing a large pool of water in the foreground. The water has a greenish tint. In the background, there are rocky walls and a stalactite hanging from the ceiling. The text "GEODATABASE CONDIVISO: TECNOLOGIE WEB" is overlaid on the image in a bold, black, sans-serif font.

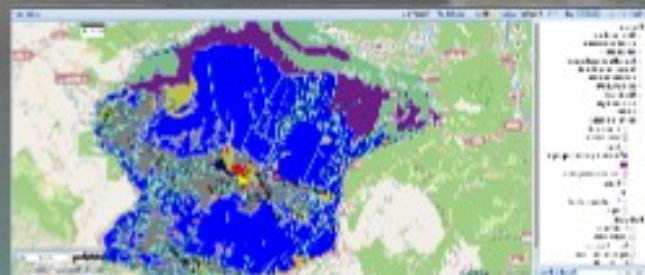
GEODATABASE CONDIVISO: TECNOLOGIE WEB



2° Step



3° Step



http://worldmap.harvard.edu/maps/asiago_plateau

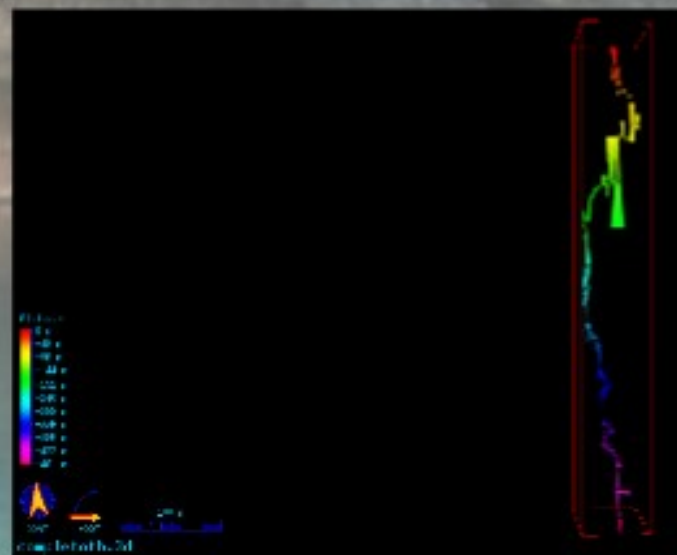
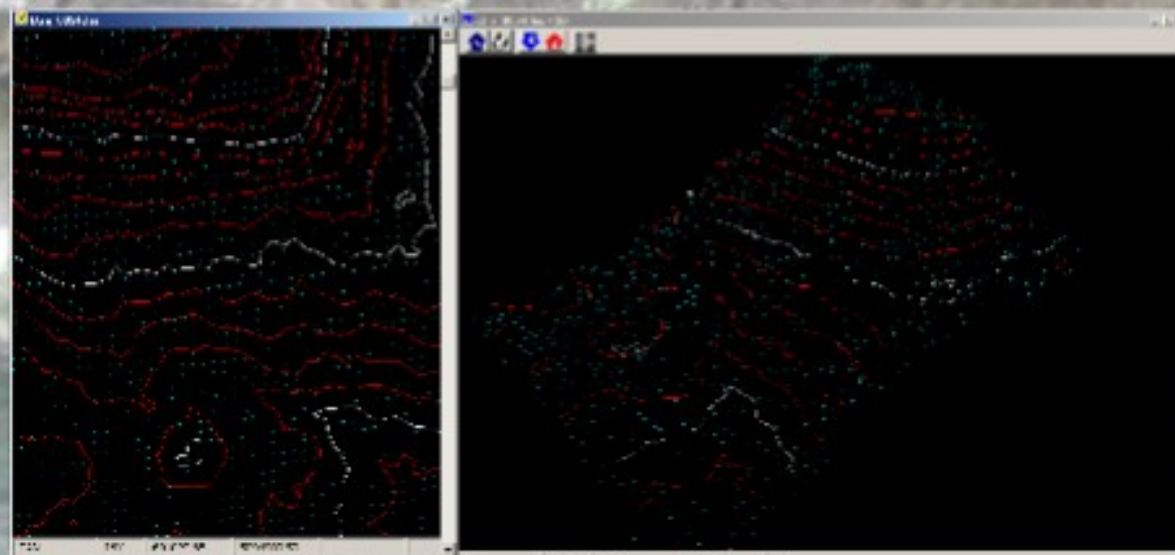
4° Step

A photograph of a cave interior. The ceiling is composed of layered rock with several long, thin stalactites hanging down. A large, calm pool of water fills the lower part of the cave, reflecting the light. The water has a slightly greenish tint. The overall atmosphere is dimly lit and mysterious.

SCENARI DI SVILUPPO

LIDAR: Laser Imaging Detection and Ranging

VTK: Visualization Toolkit





GRAZIE

Contatti:
Filippo Gregori
fgregori@inventati.org